



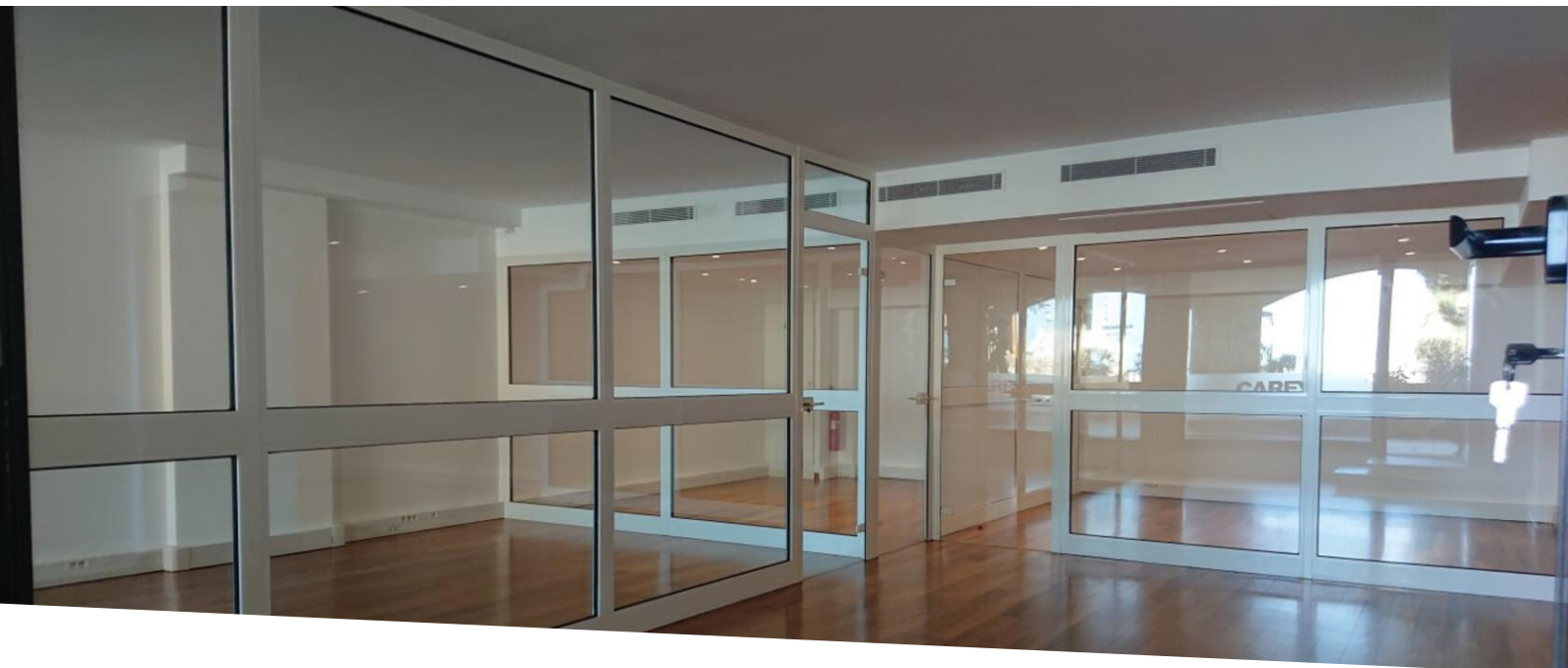
AGENCE CONTINENTALE

R E A L E S T A T E M O N A C O

Agence Continentale

19, boulevard des Moulins
98000 Monaco

Emma Ruspantini
Phone : +377 6 40 61 13 70/+377 93 50 54 64
emma@continentale.mc
www.continentale.mc



Bright office with large display case in excellent condition

Professional sale

3 710 000 €

<i>Product type</i> Office	<i>Building</i> Raphael
<i>District</i> Fontvieille	<i>Living area</i> 94 m²
<i>Floor</i> Ground floor	<i>Condition</i> Very good condition
<i>View</i> Gardens	<i>Exposure</i> North/West
<i>Release date</i> 14/09/2024	<i>Ref.</i> ACV_RAPH725

The Raphael building is located in the immediate vicinity of the port of Fontvieille, shops, the shopping centre and transport links. Its well-kept environment, bordered by gardens, offers a pleasant and practical professional environment, with quick access to restaurants and business areas in the area.

Description of this office

This recently renovated office benefits from a large window ensuring good visibility and a generous supply of natural light. The space includes a currently divided main room, a hallway, and a private bathroom. Reversible air conditioning completes this layout designed for comfortable professional use. The property is in excellent condition and is currently rented.

This space is a suitable solution for an activity seeking clarity, visibility and functionality in the heart of Fontvieille.



[MonteCarlo-RealEstate.com](https://www.MonteCarlo-RealEstate.com)

Page
1/3

Ref. : ACV_RAPH725

Ce document ne fait partie d'aucune offre ou contrat. Toutes mesures, surfaces et distances sont approximatives. Le descriptif et les plans ne sont donnés qu'à titre indicatif et leur exactitude n'est pas garantie. Les photographies ne montrent que certaines parties de la propriété. L'offre est valable sauf en cas de vente, retrait de vente, changement de prix ou d'autres conditions, sans préalable.





Résidence « Raphael »
Bureaux
n° 725-7250

