



Exclusive 4-room rental under Law 887 Luxury Residence Exotic Garden Monaco

Rental

Sole agent

9 500 € / month
+ Service charges : 600 €

<i>Product type</i> Apartment	<i>Num rooms</i> 4 rooms
<i>Building</i> L'Observatoire Palace	<i>District</i> Jardin Exotique
<i>Total area</i> 130 m²	<i>Bedrooms</i> 2
<i>Bathrooms</i> 2	<i>Parking</i> 1
<i>Cellar</i> 1	<i>Floor</i> 1
<i>Service charges</i> 600 €	<i>Condition</i> Good condition
<i>View</i> City	<i>Ref.</i> 86936281

The secure residence, equipped with an elevator and located on the prestigious boulevard du Jardin Exotique, stands out for its 1930s Art Deco architecture, combining charm, elegance, and refinement.

We are pleased to offer you exclusively for rent a beautiful 4-room apartment under the Law, approximately 130sqm with city view. It is located in a stately building with a concierge, in the heart of the quiet district of Jardin Exotique, within the "Observatoire Palace".

The apartment consists of a spacious entrance hall, a guest toilet, a spacious double living area comprising a



MonteCarlo-RealEstate.com

Page
1/5

Ref. : 86936281

Ce document ne fait partie d'aucune offre ou contrat. Toutes mesures, surfaces et distances sont approximatives. Le descriptif et les plans ne sont donnés qu'à titre indicatif et leur exactitude n'est pas garantie. Les photographies ne montrent que certaines parties de la propriété. L'offre est valable sauf en cas de vente, retrait de vente, changement de prix ou d'autres conditions, sans préalable.

living room and a dining room, as well as two bedrooms, each with its own bathroom.

A separate kitchen completes this main space.

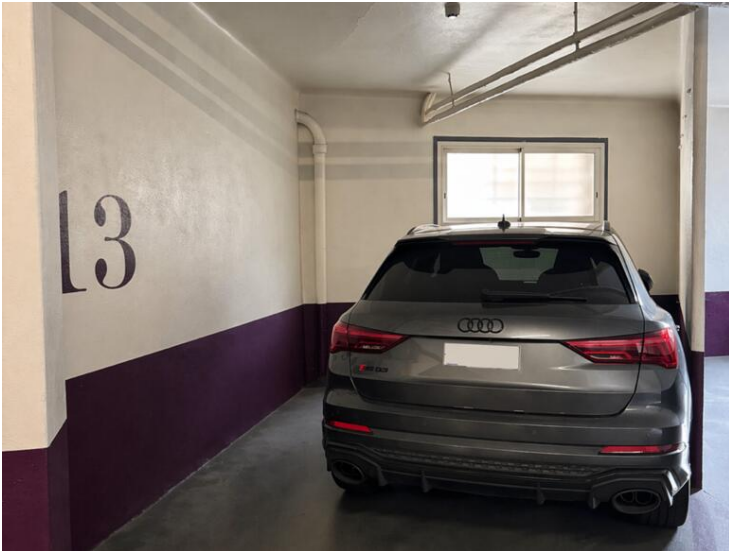
Adjacent to it, you will find a guest bedroom, a patio converted into a laundry room, and a cellar/storage room.

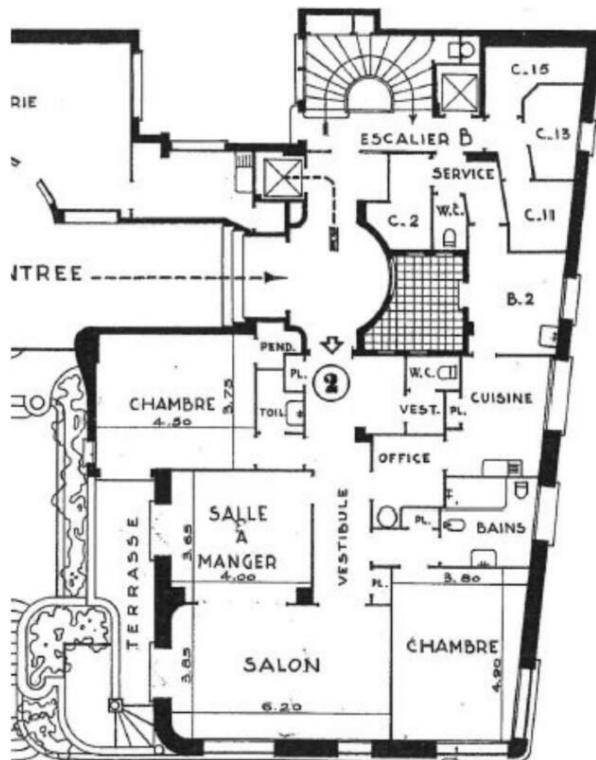
A terrace harmoniously extends the living space.

A large parking space within the building rounds out this Property.

The apartment charms with its high ceilings and high-quality finishes, notably a magnificent hardwood floors in the bedrooms, living room, and hallway.







**L'OBSERVATOIRE
PALACE**

- 1 entrée
- 1 salon
- 1 salle à manger
- 1 cuisine
- 2 chambres
- 2 salles de bains
- 1 toilettes
- 1 bureau
- 1 chambre de service
- 1 balcon

Surface totale 130 m²

- 1 entrance hall
 - 1 living room
 - 1 dining room
 - 1 kitchen
 - 2 bedrooms
 - 2 bathrooms
 - 1 toilet
 - 1 study
 - 1 staff bedroom
 - 1 balcony
- Total surface area 130 sqm**



