



## Donatello : 1 Bedroom with Cellar & Parking

Rental

**Sole agent**

**6 500 € / month**

+ Service charges : 250 €

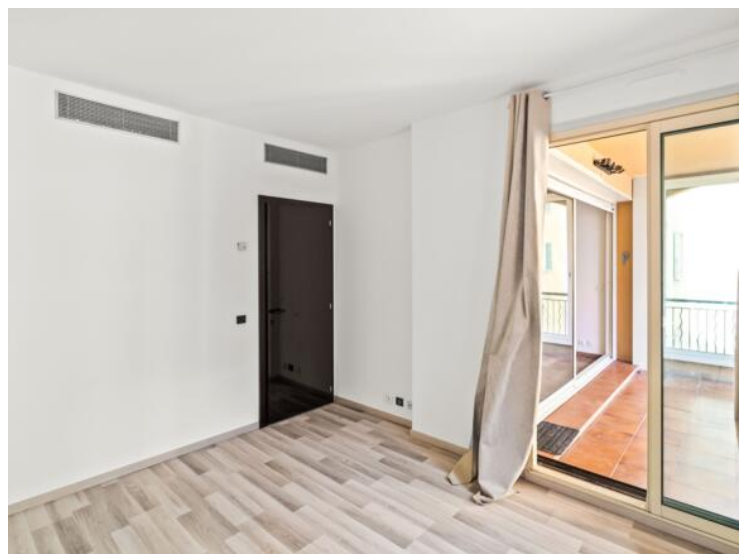
|  |   |
|--|---|
| <i>Product type</i><br><b>Apartment</b>        | <i>Num rooms</i><br><b>2 rooms</b>            |
| <i>Building</i><br><b>Le Donatello</b>         | <i>District</i><br><b>Fontvieille</b>         |
| <i>Living area</i><br><b>65 m<sup>2</sup></b>  | <i>Terrace area</i><br><b>7 m<sup>2</sup></b> |
| <i>Total area</i><br><b>72 m<sup>2</sup></b>   | <i>Bedroom</i><br><b>1</b>                    |
| <i>Parking</i><br><b>1</b>                     | <i>Cellar</i><br><b>1</b>                     |
| <i>Floor</i><br><b>2</b>                       | <i>Service charges</i><br><b>250 €</b>        |
| <i>Condition</i><br><b>Very good condition</b> | <i>Mixed use</i><br><b>Yes</b>                |
| <i>View</i><br><b>Garden</b>                   | <i>Release date</i><br><b>01/05/2026</b>      |
| <i>Ref.</i><br><b>WL Donatello 003</b>         |   |

Located in the building with concierge of the "Donatello", this 1bedroom apartment consists of a main room with kitchen equiped, a bright bedroom and a large quiet terrace.

A cellar and a parking space in the building are included in the offer.





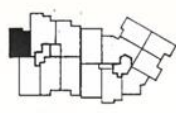






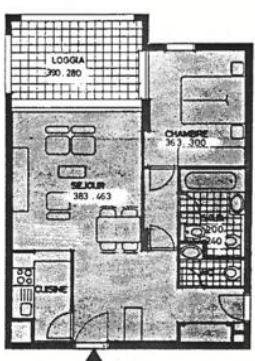
**Résidence DONATELLO**

NOUVEAU PORT DE MONACO  
FONTVIEILLE VILLAGE



APPARTEMENT ..... 2 pièces  
NIVEAU ..... 2, 3, 4.  
SURFACE APP. 72,10 m<sup>2</sup>  
HORS TOUT

A2 - 27 / 37 / 47



LOGGIA 390,280  
CHAMBRE 363,300  
SÉJOUR 383,463  
CUISINE 300,000  
SALLE D'EAU 240,000

Les cotes indiquées sont approximatives  
Le dessin et les dispositions générales de l'appartement sont susceptibles de variations en fonction des nécessités techniques.

