



CO-EXCLUSIVITY: TOUR ODEON Duplex, Panoramic View

Rental

Co-exclusive

180 000 € / month
+ Service charges : 18.000 €

| | |
|---|--|
| <i>Product type</i> Duplex | <i>Num rooms</i> 8 |
| <i>Building</i> Tour Odéon | <i>District</i> La Rouse - Saint Roman |
| <i>Living area</i> 880 m² | <i>Terrace area</i> 295 m² |
| <i>Total area</i> 1 175 m² | <i>Bedrooms</i> 5 |
| <i>Bathrooms</i> 5 | <i>Parkings</i> 7 |
| <i>Floor</i> 43 | <i>Service charges</i> 18 000 € |
| <i>Condition</i> New | <i>View</i> Panoramic sea |
| <i>Exposure</i> SOUTHWEST | <i>Release date</i> Available |
| <i>Ref.</i> LMC1542* | |

Dive into the world of absolute luxury and elevate your everyday life to unparalleled heights by discovering the exceptional Tour Odéon. This prestigious duplex apartment, with an area of 1175 m² and 7 rooms, embodies refinement, offering tranquility and well-being in the heart of Monaco, with a panoramic view of the Mediterranean. Within this exceptional residence, you have access to a range of high-end services, such as concierge service, valet, private shuttle, a spa, an indoor pool, and exclusive room service from the Cipriani restaurant. Every detail has been designed to blend aesthetics with cutting-edge technology, creating a space where luxury, modernity, and functionality meet. This exceptional property combines aesthetics with advanced technology. The two floors of this refined apartment feature a luxurious décor, blending luxury, modernity, and functionality into a

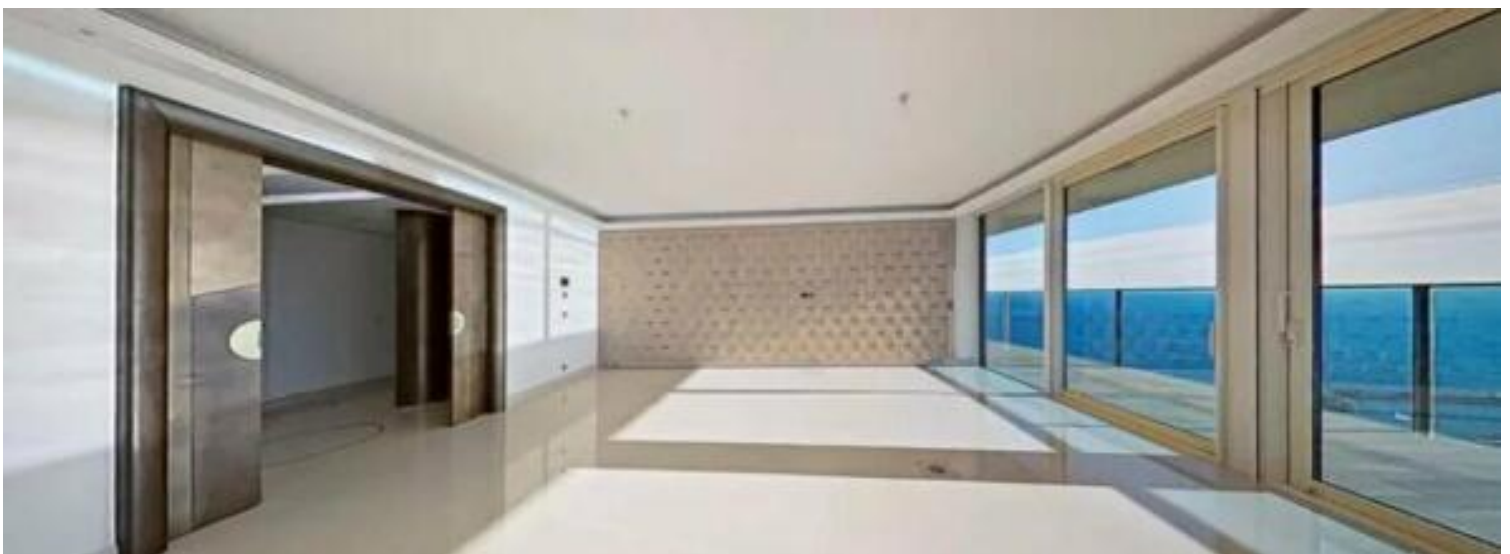


unique atmosphere.

On the 43rd floor of this exceptional property, you'll discover a refined living space of rare elegance. A majestic entrance hall welcomes you, opening onto a spacious double living room bathed in natural light, ideal for entertaining. The dining room, also generously proportioned, invites you to share meals in a sleek, contemporary decor. The fully-equipped kitchen with adjoining pantry combines modern design and functionality. For moments of relaxation, a room is dedicated to home cinema. An elegant study completes this floor with refinement. The master bedroom, a true cocoon of luxury, has its own spacious dressing room and en suite bathroom.

On the 44th floor, the elegance continues with a vast living room, ideally designed to offer an exceptional living environment. The master bedroom, a true royal suite, boasts large walk-in closets and a sumptuous en suite bathroom. Two other spacious bedrooms, each with en suite bathroom, ensure comfort and independence. A laundry area and a maid's room with shower room complete the layout of this floor. Seven parking spaces and a cellar complete this property.









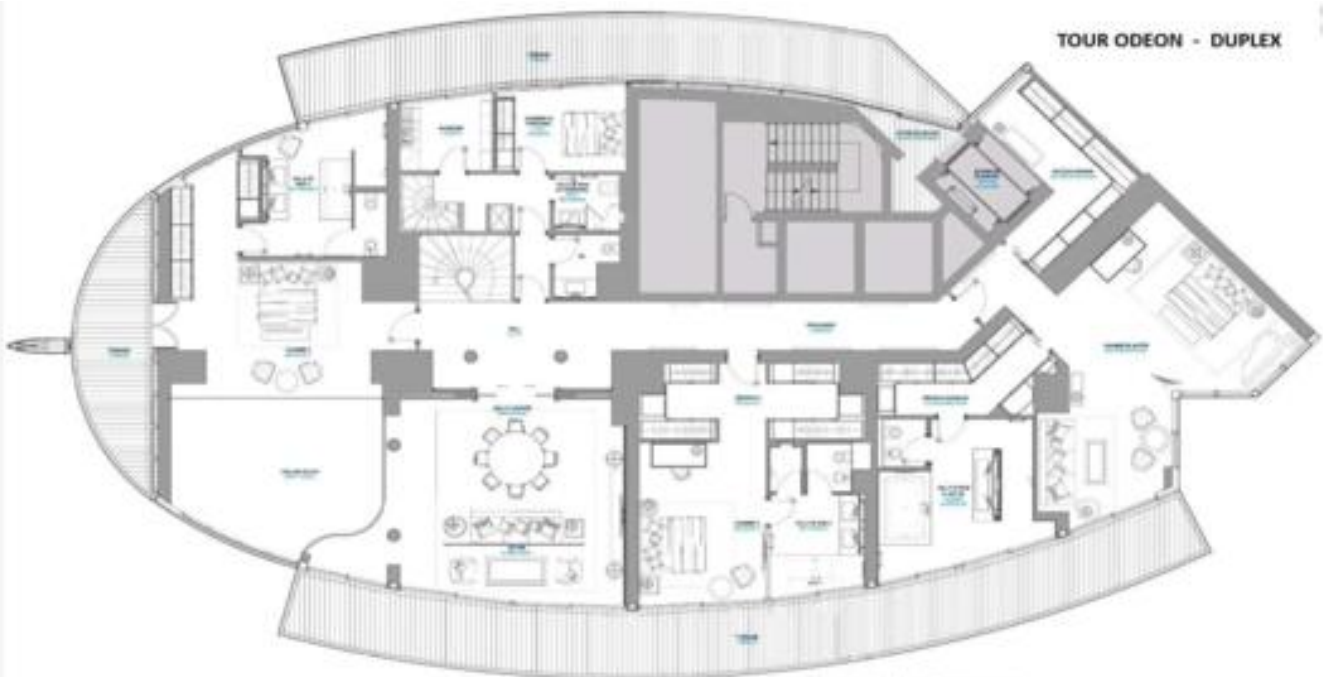


43ème étage



43ème étage
- Intérieur : 422,80 M²
- Terrasse : 147,70 M²
- Palier : 34,20 M²

44ème étage
- Intérieur : 422,80 M²
- Terrasse : 147,80 M²
Surface totale : 1175,40 M²



44ème étage



44ème étage
- Intérieur : 422,80 M²
- Terrasse : 147,80 M²

43ème étage
- Intérieur : 422,80 M²
- Terrasse : 147,70 M²
- Palier : 34,20 M²
Surface totale : 1175,40 M²

