



CAROLI REAL ESTATE
GROUPE CAROLI

Caroli Real Estate

27, boulevard d'Italie
98000 Monaco

Tél : +377 93 25 51 22

Fax : +377 92 16 17 00

commercial.carolirealestate@groupecaroli.mc

www.caroli-realestate.com



Verkauf

Preis auf Anfrage

Produkttyp Duplex	Zimmer 2 Zimmer	Gebäude Parc Saint Roman	District La Rousse - Saint Roman
Wohnfläche 90 m²	Terrasse Fläche 10 m²	Totale Fläche 100 m²	Chambre 1
Parkplatz 1	Keller 1	Meublé Ja	Verfügbar ab Immédiatement
Hinweis PSR-100			



MonteCarlo-RealEstate.com

Seite
1/3

Hinweis : PSR-100

This document does not form part of any offer or contract. All measurements, areas and distances are approximate. The information and plans contained herein are believed to be correct, however, their accuracy is not guaranteed. The photographs show only certain parts of the property at the time they were taken. This offer is subject to change of price or other conditions, without prior notice.



CAROLI REAL ESTATE
GROUPE CAROLI

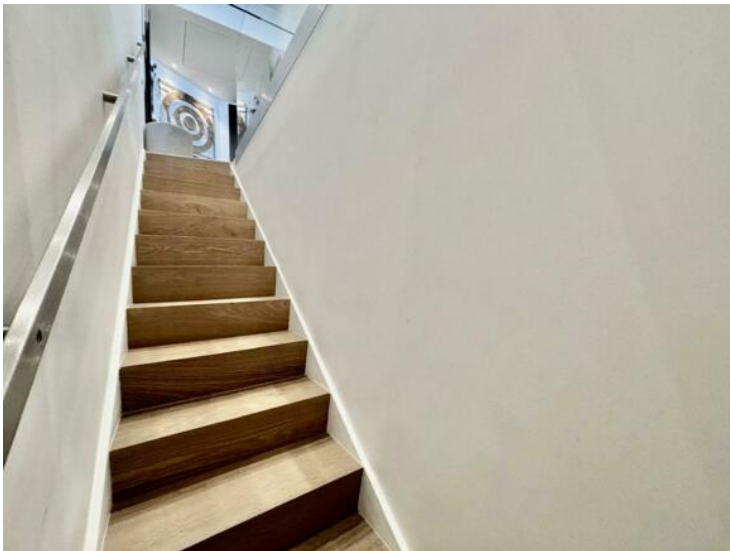
Caroli Real Estate

Tél : +377 93 25 51 22

Fax : +377 92 16 17 00

commercial.carolirealestate@groupecaroli.mc

www.caroli-realestate.com



MonteCarlo-RealEstate.com

Seite
2/3

Hinweis : PSR-100

This document does not form part of any offer or contract. All measurements, areas and distances are approximate. The information and plans contained herein are believed to be correct, however, their accuracy is not guaranteed. The photographs show only certain parts of the property at the time they were taken. This offer is subject to change of price or other conditions, without prior notice.



CAROLI REAL ESTATE
GROUPE CAROLI

Caroli Real Estate

Tél : +377 93 25 51 22

Fax : +377 92 16 17 00

commercial.carolirealestate@groupecaroli.mc

www.caroli-realestate.com



MonteCarlo-RealEstate.com

Seite
3/3

Hinweis : PSR-100

This document does not form part of any offer or contract. All measurements, areas and distances are approximate. The information and plans contained herein are believed to be correct, however, their accuracy is not guaranteed. The photographs show only certain parts of the property at the time they were taken. This offer is subject to change of price or other conditions, without prior notice.