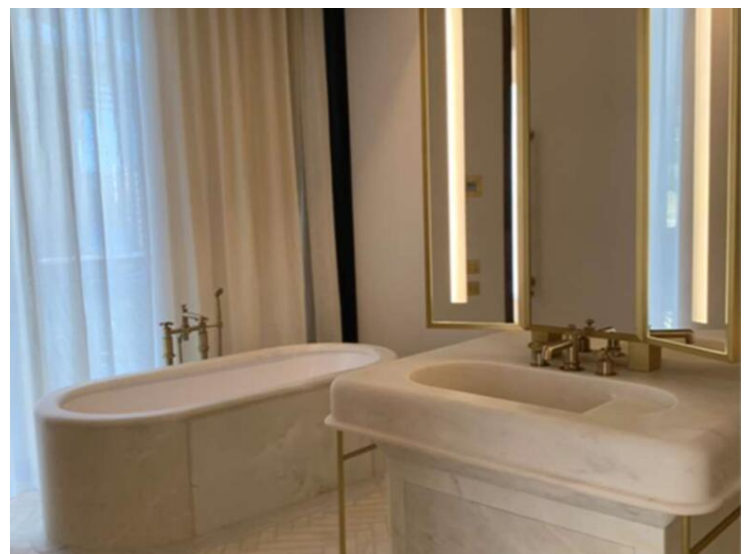
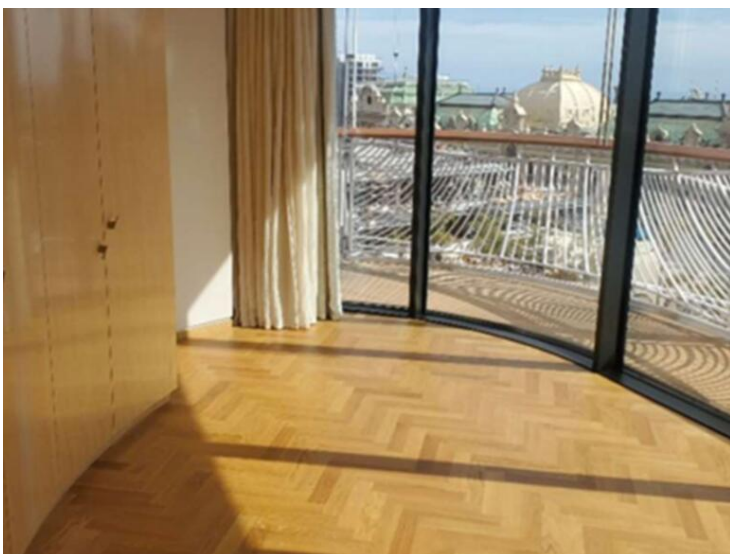


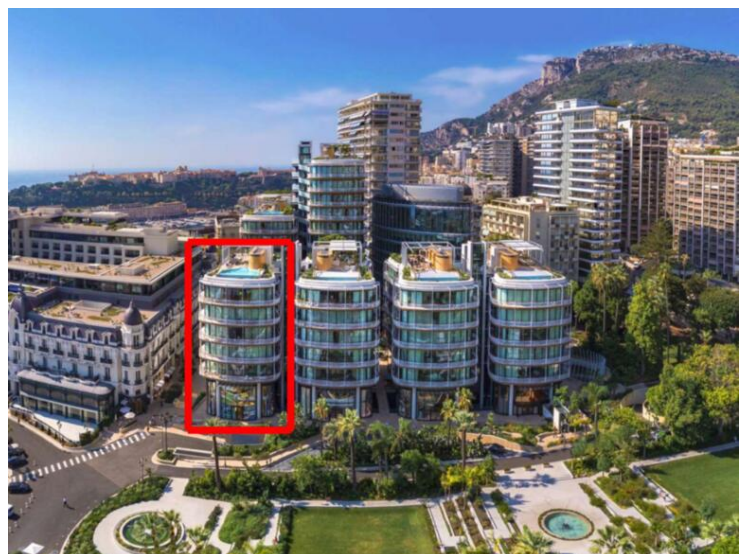
## Vermietung

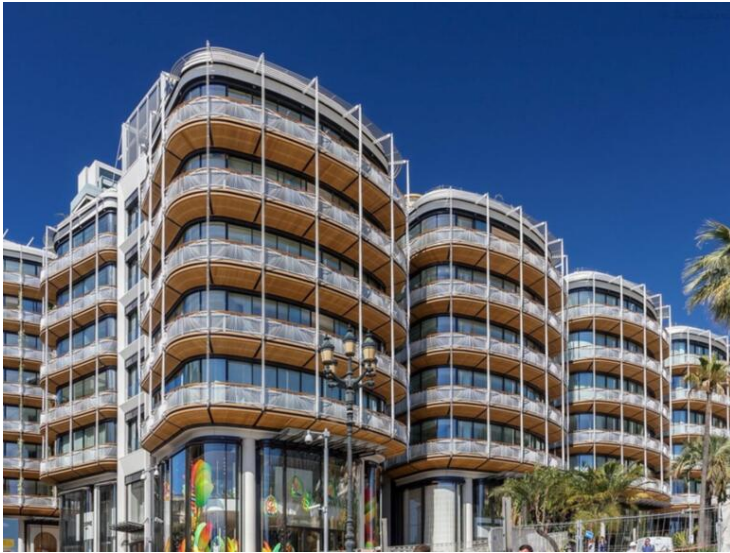
170 000 € / Monat

|  |   |   |   |
|--|---|---|---|
| Produkttyp<br><b>Duplex</b>            | Zimmer<br><b>6</b>                          | Gebäude<br><b>One Monte-Carlo</b>           | District<br><b>Carré d'Or</b>           |
| Wohnfläche<br><b>410 m<sup>2</sup></b> | Terrasse Fläche<br><b>117 m<sup>2</sup></b> | Totale Fläche<br><b>527 m<sup>2</sup></b>   | Schlafzimmer<br><b>4</b>                |
| Salles de bains<br><b>5</b>            | Parkplätze<br><b>3</b>                      | Keller<br><b>1</b>                          | Zustand<br><b>Prestations luxueuses</b> |
| Blick<br><b>Vue ville</b>              | Verfügbar ab<br><b>Mars 2026</b>            | Hinweis<br><b>VCB - ONE - C3 - 02 - L06</b> |   |

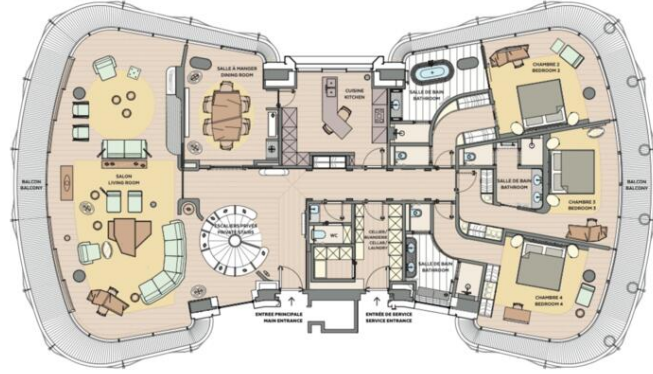








one  
MONTE  
CARLO



Place du Casino  
Principauté de Monaco

APPARTEMENT DUPLEX  
4 CHAMBRES - ÉTAGE SUPÉRIEUR  
DUPLEX APARTMENT  
4 BEDROOMS - UPPER FLOOR

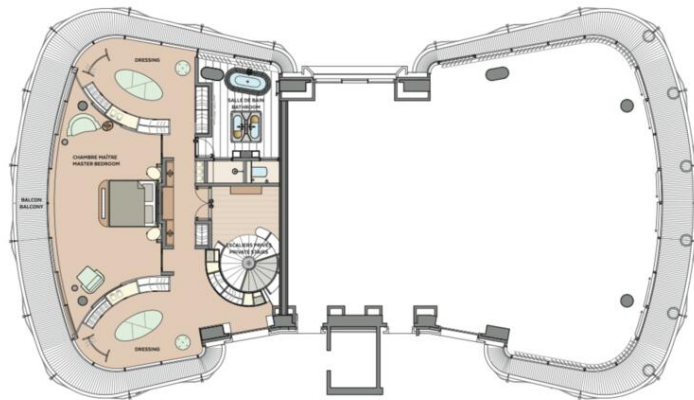
SURFACE TOTALE HABITABLE  
TOTAL INTERNAL AREA  
410 m<sup>2</sup>

SURFACE TOTALE  
EXTÉRIEURE  
TOTAL EXTERNAL AREA  
117 m<sup>2</sup>

Plan non contractuel  
Location non meublée

Floor plans are not contractually binding  
Non furnished apartments

one  
MONTE  
CARLO



Place du Casino  
Principauté de Monaco

APPARTEMENT DUPLEX  
4 CHAMBRES - ÉTAGE INFÉRIEUR  
DUPLEX APARTMENT  
4 BEDROOMS - LOWER FLOOR

SURFACE TOTALE HABITABLE  
TOTAL INTERNAL AREA  
410 m<sup>2</sup>

SURFACE TOTALE  
EXTÉRIEURE  
TOTAL EXTERNAL AREA  
117 m<sup>2</sup>

Plan non contractuel  
Location non meublée

Floor plans are not contractually binding  
Non furnished apartments

