



Verkauf

399 000 €

Produkttyp <b>Wohnung</b>	Zimmer <b>2 Zimmer</b>	District <b>Èze</b>	Stadt <b>Èze</b>
Land <b>Frankreich</b>	Wohnfläche <b>42,86 m²</b>	Terrasse Fläche <b>8 m²</b>	Garten Fläche <b>28,06 m²</b>
Totale Fläche <b>78,92 m²</b>	Salle de bains <b>1</b>	Stockwerk <b>rez-de-jardin</b>	Zustand <b>Neubau</b>
Hinweis <b>SP-RB-85905829</b>			



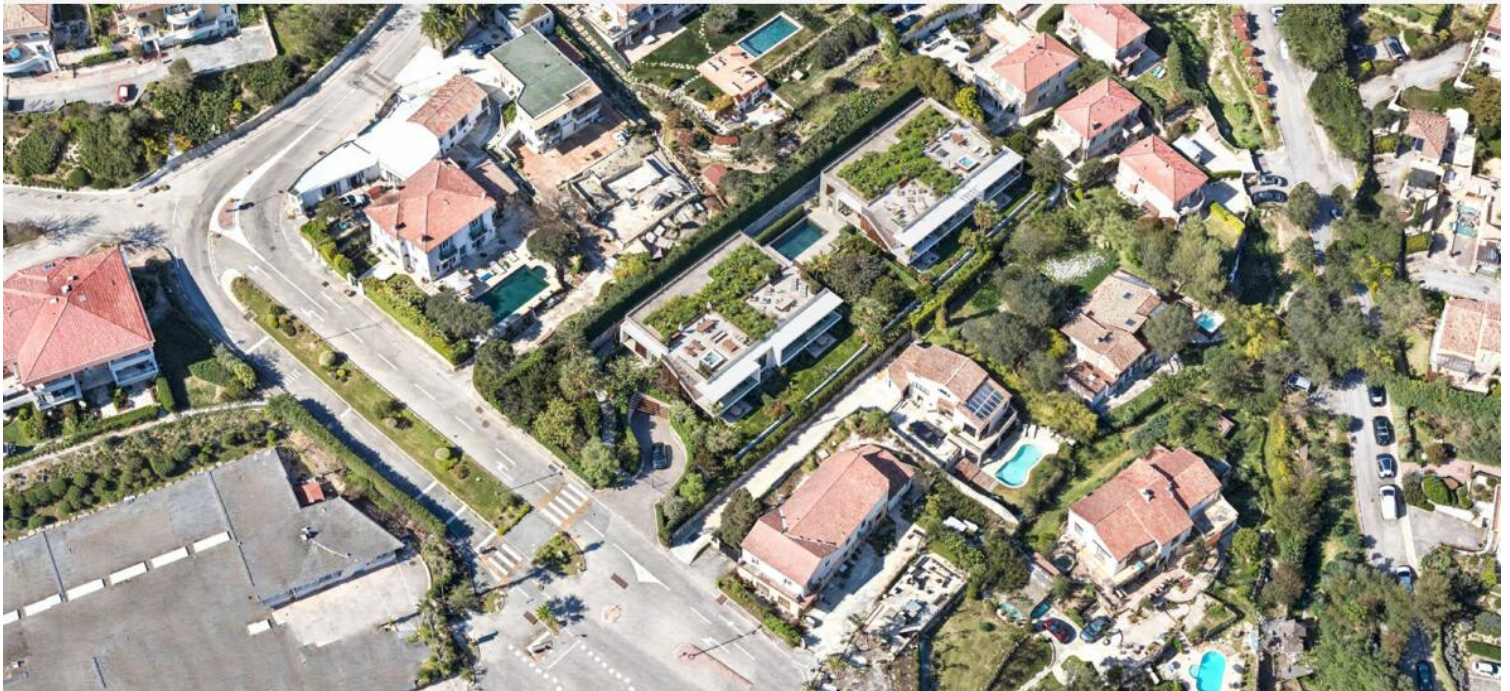
MonteCarlo-RealEstate.com

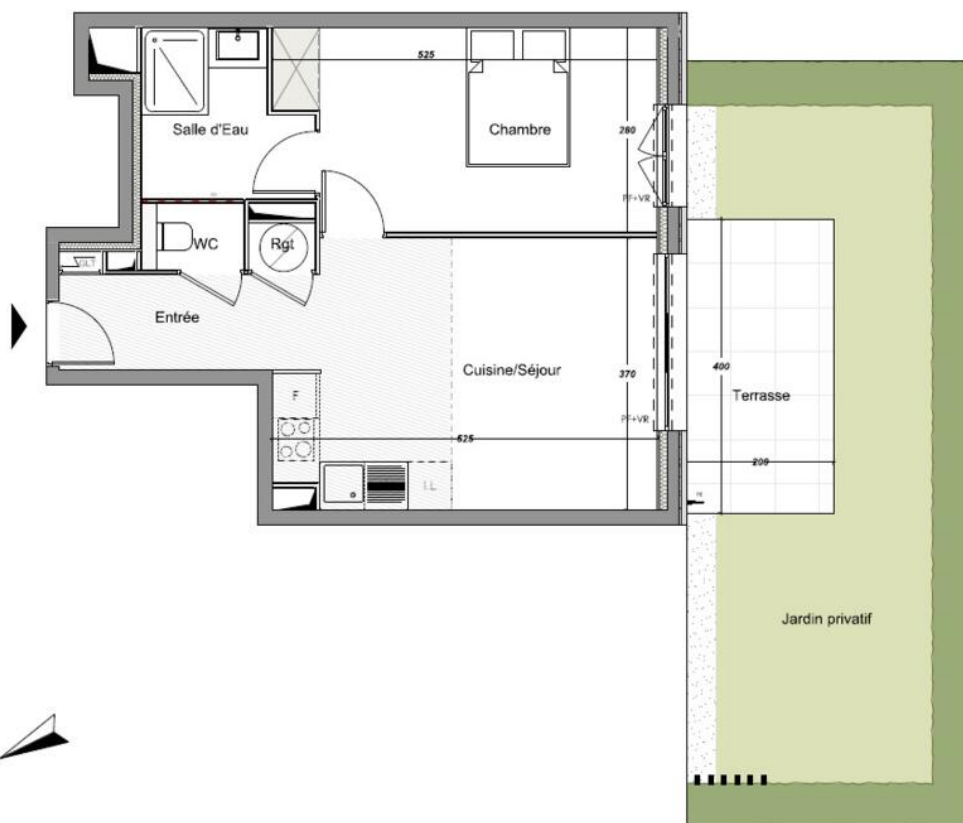
Seite  
1/3

Hinweis : SP-RB-85905829

This document does not form part of any offer or contract. All measurements, areas and distances are approximate. The information and plans contained herein are believed to be correct, however, their accuracy is not guaranteed. The photographs show only certain parts of the property at the time they were taken. This offer is subject to change of price or other conditions, without prior notice.







954/962, Boulevard Maréchal Lédere 06 360 Eze	LOT A01
APPELLEMENT 2 PIÈCES-RD	
Chambre	13,61
Cuisine/Séjour	19,35
Entrée	3,35
Rgt	0,57
Salle d'Eau	4,73
WC	1,25
<b>TOTAL SURFACE HABITABLE</b>	<b>42,84 m²</b>
Jardin privé	28,06
Terrasse	8,00
<b>TOTAL SURFACE EXTERIEURE</b>	<b>34,06 m²</b>
<b>TOTAL SURFACE UTILE</b>	<b>76,92 m²</b>
<ul style="list-style-type: none"> <li>Ballon thermodynamique</li> <li>Gaine</li> <li>Machine à laver</li> <li>Mosquée</li> <li>Fouca-Matond</li> <li>PE Point d'eau</li> <li>PF Porte-fenêtre</li> <li>VR Vitrail rodant</li> <li>Tableau électrique</li> </ul>	
<b>ATELIER ALLIONE</b> ARCHITECTES	

