



## Verkauf

1 300 000 €

Produkttyp <b>Haus</b>	Zimmer <b>7</b>	Stadt <b>Roquebrune-Cap-Martin</b>	Land <b>Frankreich</b>
Wohnfläche <b>200 m²</b>	Land Fläche <b>1 400 m²</b>	Chambres <b>4</b>	Salles de bains <b>4</b>
Parkplätze <b>2</b>	Keller <b>1</b>	Parkbox <b>1</b>	Stockwerk <b>3</b>
Zustand <b>Renovierungsarbeiten notwendig</b>	Hinweis <b>PE_7P_VILLA RCM PINELLA</b>		

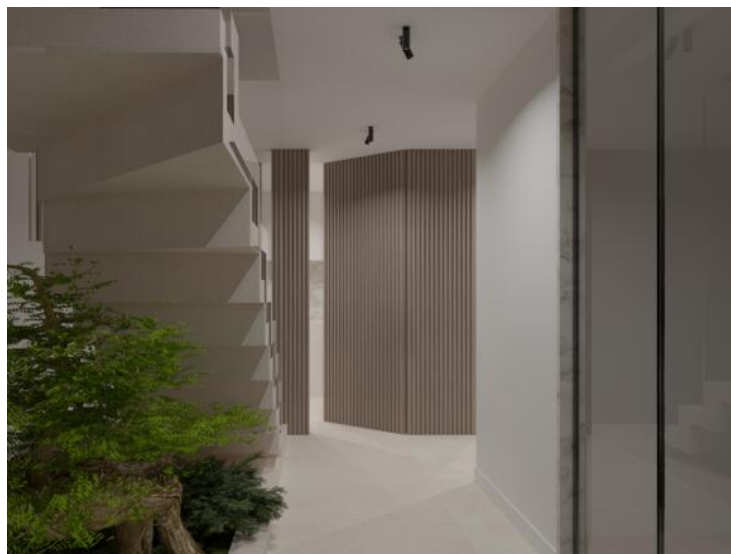


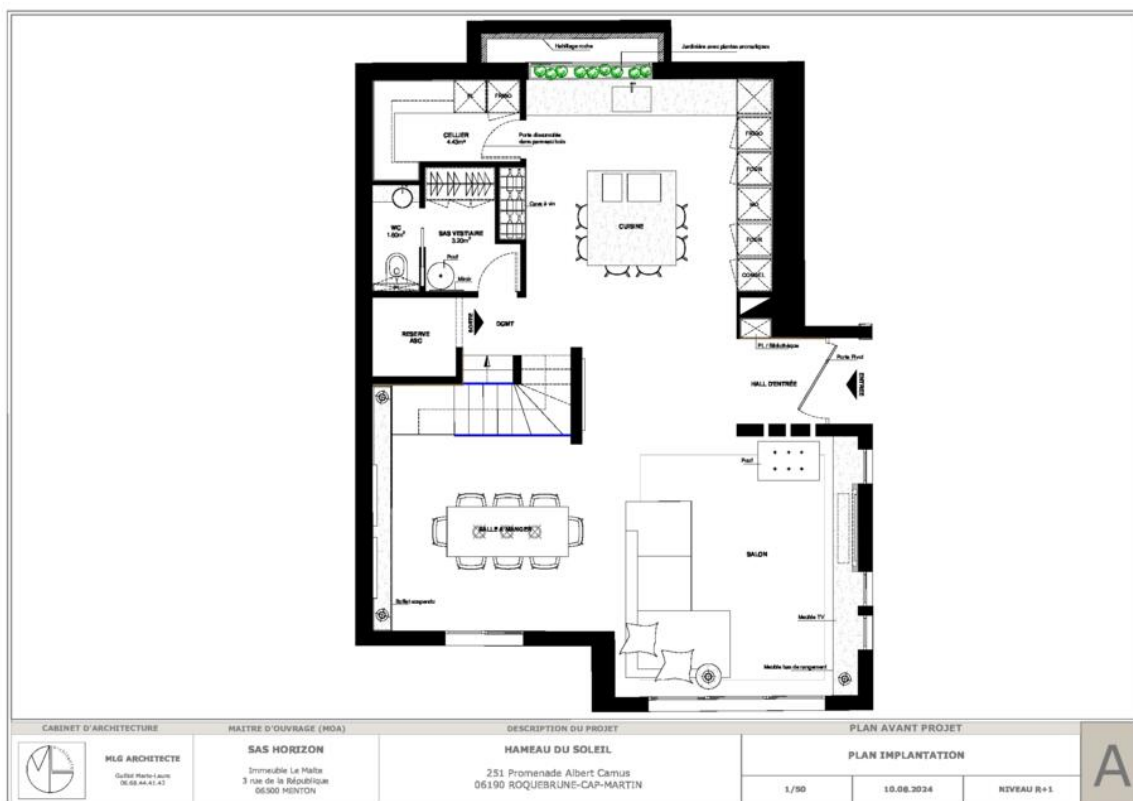
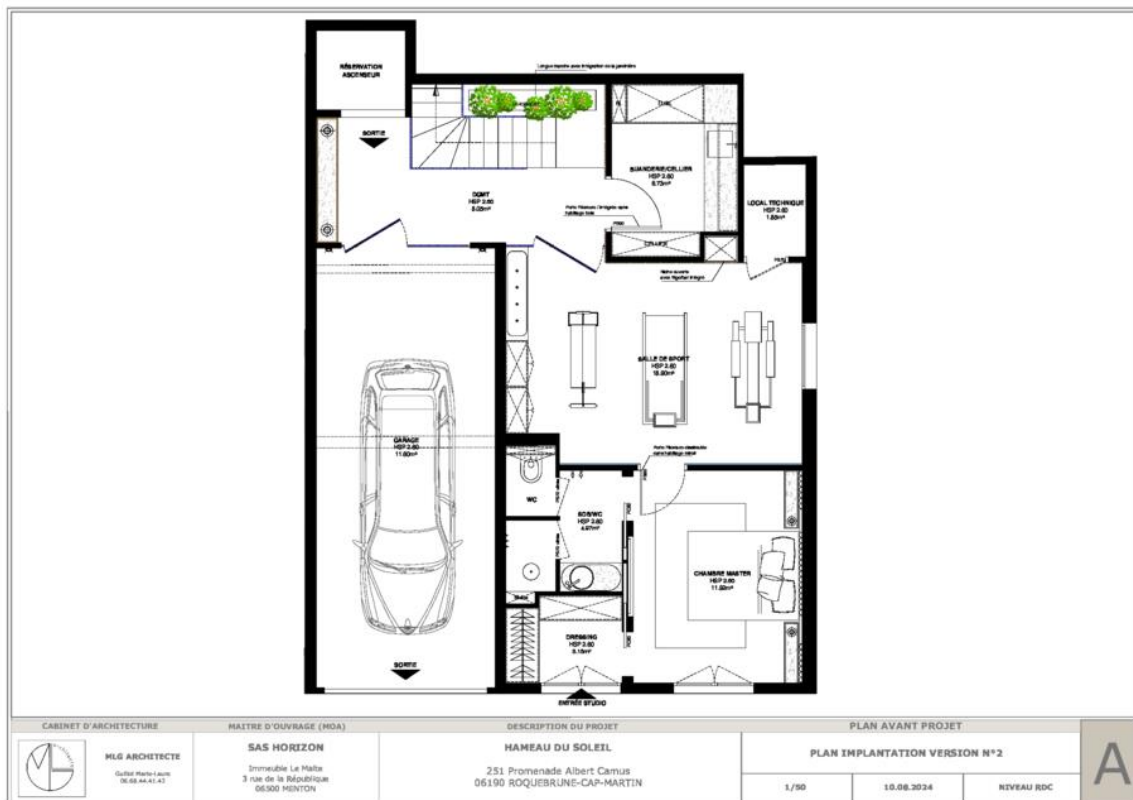
MonteCarlo-RealEstate.com

Seite  
1/6


Hinweis : PE\_7P\_VILLA RCM PINELLA

This document does not form part of any offer or contract. All measurements, areas and distances are approximate. The information and plans contained herein are believed to be correct, however, their accuracy is not guaranteed. The photographs show only certain parts of the property at the time they were taken. This offer is subject to change of price or other conditions, without prior notice.







CABINET D'ARCHITECTURE	MAÎTRE D'OUVRAGE (MOA)	DESCRIPTION DU PROJET	PLAN AVANT PROJET		
 <b>M&amp;S ARCHITECTE</b> <small>Gilles Mouton Architecte 06.83.44.41.41</small>	<b>SAS HORIZON</b> <small>Immeuble Le Maître 3 rue de la République 06300 MENTON</small>	<b>HAMEAU DU SOLEIL</b> <small>251 Promenade Albert Camus 06190 ROQUEBRUNNE-CAP-MARTIN</small>	<b>PLAN IMPLANTATION VERSION N°1</b>		
			1/50	10.08.2024	NIVEAU R+0

A



CABINET D'ARCHITECTURE	MAÎTRE D'OUVRAGE (MOA)	DESCRIPTION DU PROJET	PLAN AVANT PROJET		
 <b>M&amp;S ARCHITECTE</b> <small>Gilles Mouton Architecte 06.83.44.41.41</small>	<b>SAS HORIZON</b> <small>Immeuble Le Maître 3 rue de la République 06300 MENTON</small>	<b>HAMEAU DU SOLEIL</b> <small>251 Promenade Albert Camus 06190 ROQUEBRUNNE-CAP-MARTIN</small>	<b>PLAN PROJET</b>		
			1/50	10.08.2024	NIVEAU R+1

A







