



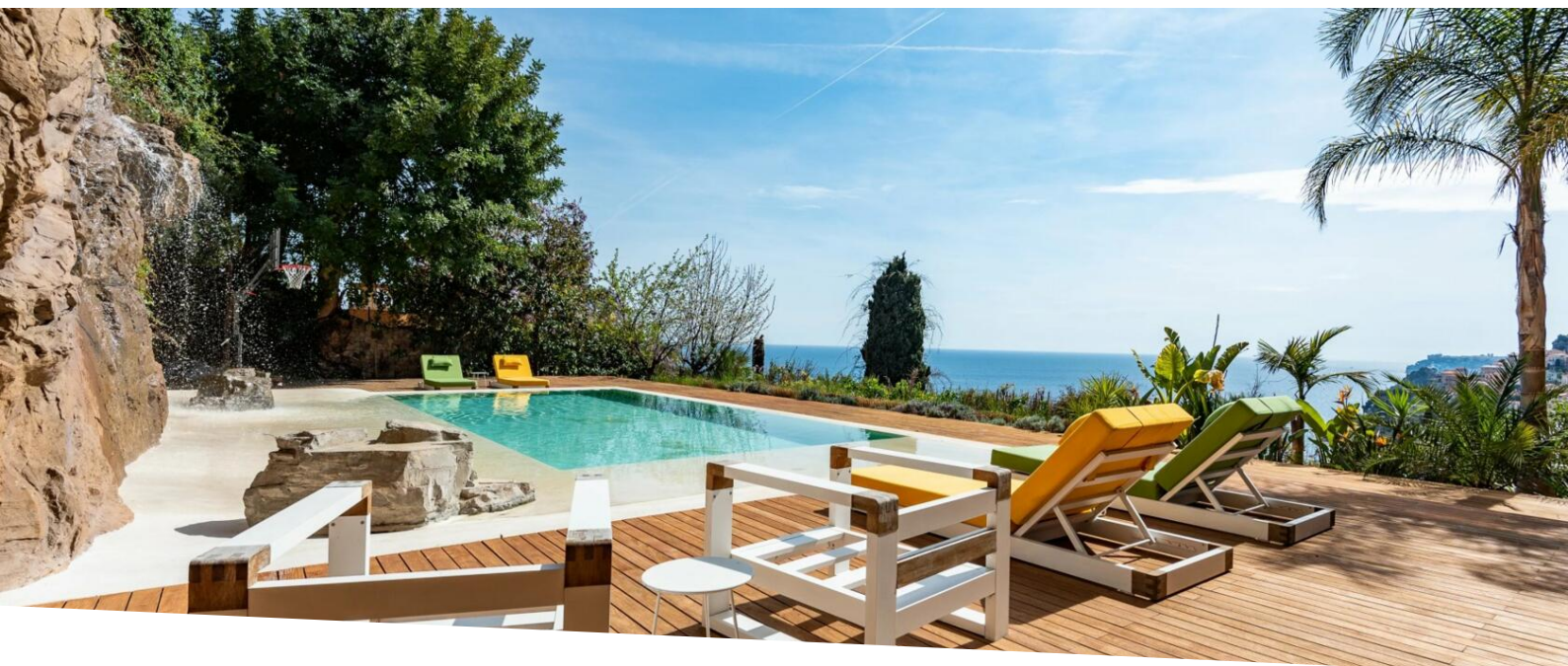
WALDHOF REAL ESTATE

Waldhof Real Estate

2, RUE DU GABIAN-C/° IBC
3 ETG - BUREAU EXCLUSIF N° 707 98000 MONACO

98000 Monaco

Tél : +33 6 21 41 65 39
monaco@waldhof.fr
waldhof.fr



Verkauf

8 500 000 €

Produkttyp
Haus

Zimmer

Stadt
**Roquebrune-Cap-
Martin**
Chambres
6

Land
Frankreich

Wohnfläche
360 m²

Land Fläche
1 028 m²

Salles de bains
6

Hinweis
82437645



MonteCarlo-RealEstate.com

Seite
1/6

Hinweis : 82437645

This document does not form part of any offer or contract. All measurements, areas and distances are approximate. The information and plans contained herein are believed to be correct, however, their accuracy is not guaranteed. The photographs show only certain parts of the property at the time they were taken. This offer is subject to change of price or other conditions, without prior notice.



WALDHOF REAL ESTATE

Waldhof Real Estate

Tél : +33 6 21 41 65 39
monaco@waldhof.fr
waldhof.fr



MonteCarlo-RealEstate.com

Seite
2/6

Hinweis : 82437645

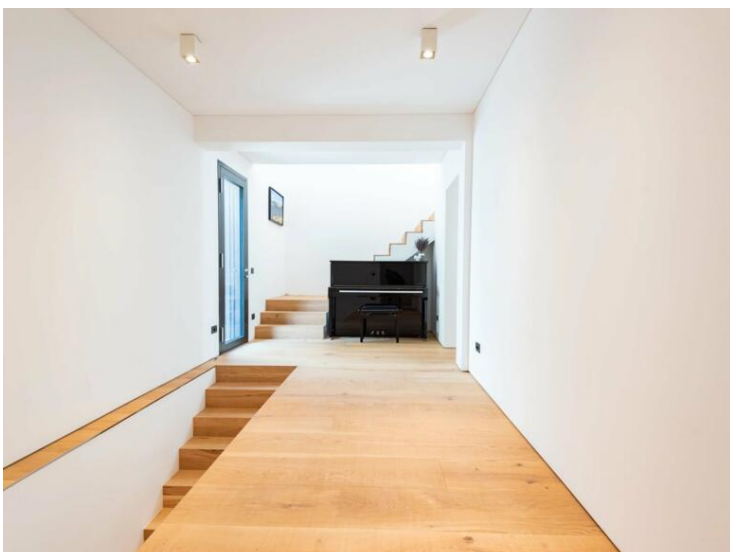
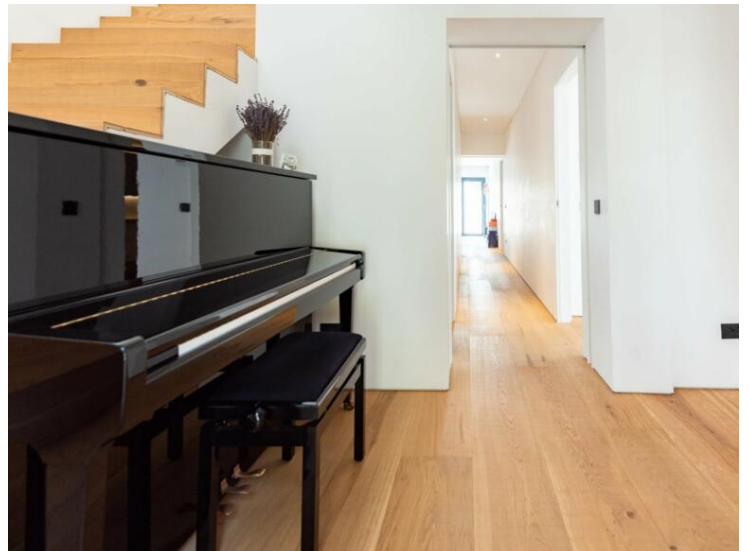
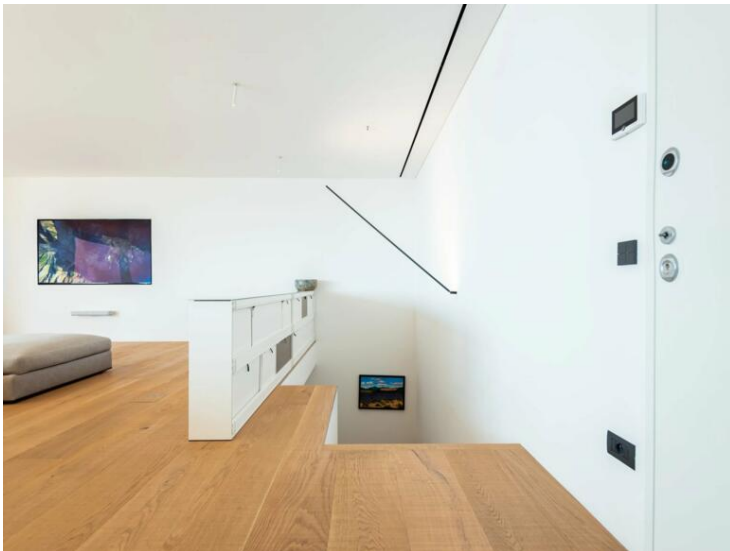
This document does not form part of any offer or contract. All measurements, areas and distances are approximate. The information and plans contained herein are believed to be correct, however, their accuracy is not guaranteed. The photographs show only certain parts of the property at the time they were taken. This offer is subject to change of price or other conditions, without prior notice.



WALDHOF REAL ESTATE

Waldhof Real Estate

Tél : +33 6 21 41 65 39
monaco@waldhof.fr
waldhof.fr



MonteCarlo-RealEstate.com

Seite
3/6

Hinweis : 82437645

This document does not form part of any offer or contract. All measurements, areas and distances are approximate. The information and plans contained herein are believed to be correct, however, their accuracy is not guaranteed. The photographs show only certain parts of the property at the time they were taken. This offer is subject to change of price or other conditions, without prior notice.



WALDHOF REAL ESTATE

Waldhof Real Estate

Tél : +33 6 21 41 65 39
monaco@waldhof.fr
waldhof.fr



MonteCarlo-RealEstate.com

Seite
4/6

Hinweis : 82437645

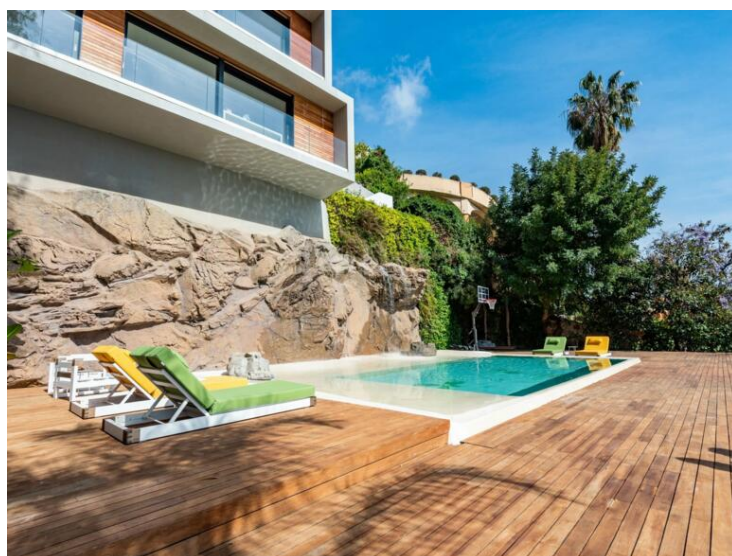
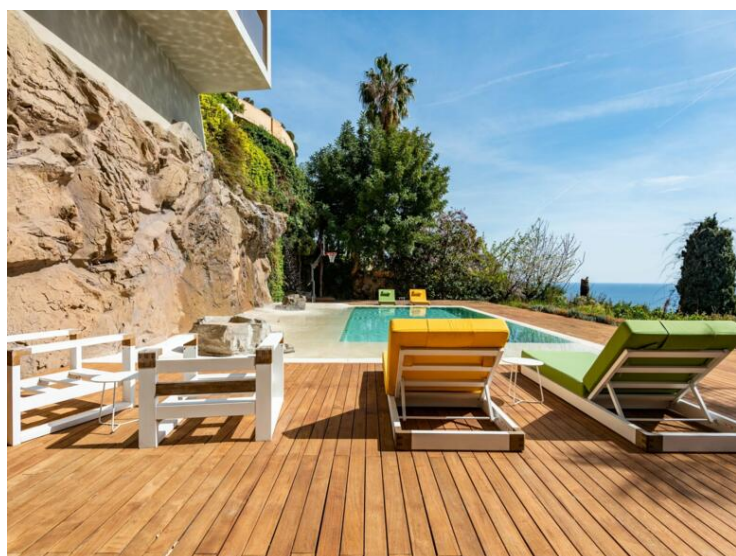
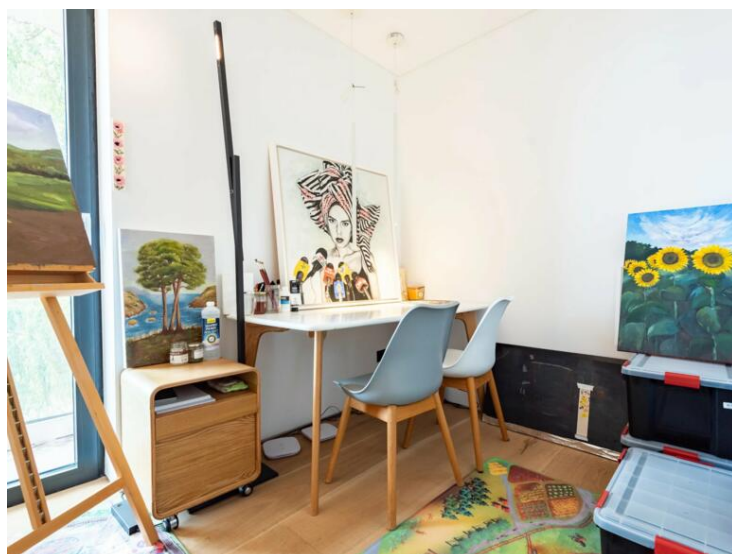
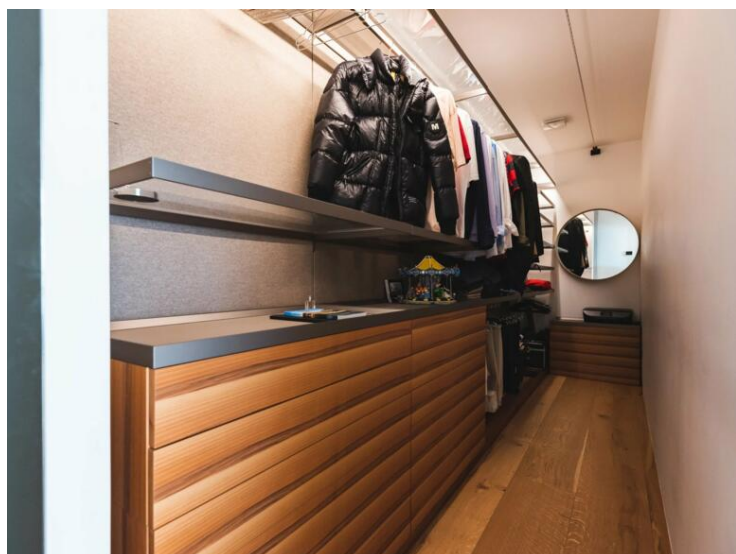
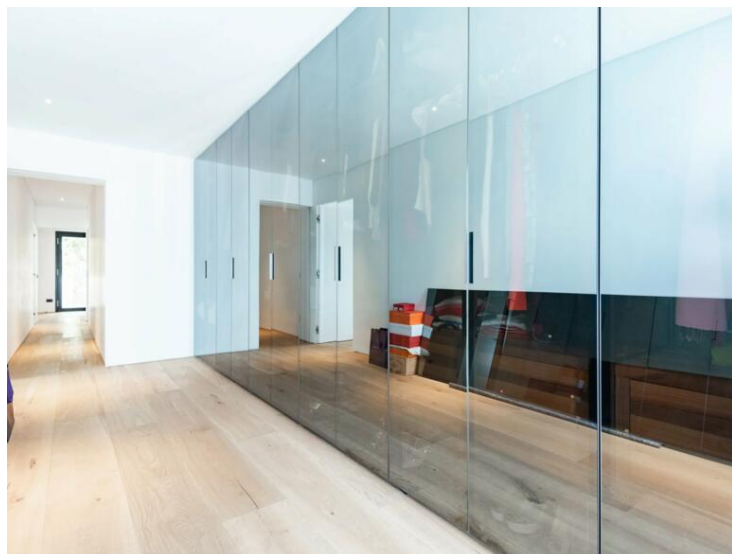
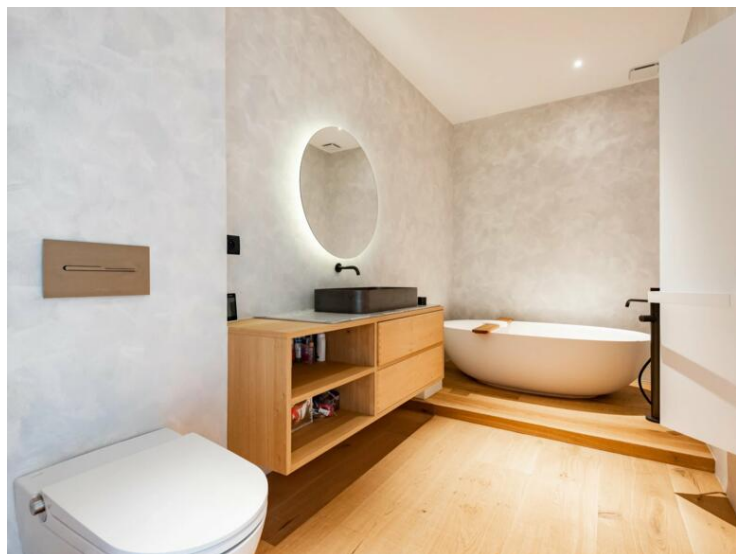
This document does not form part of any offer or contract. All measurements, areas and distances are approximate. The information and plans contained herein are believed to be correct, however, their accuracy is not guaranteed. The photographs show only certain parts of the property at the time they were taken. This offer is subject to change of price or other conditions, without prior notice.



WALDHOF REAL ESTATE

Waldhof Real Estate

Tél : +33 6 21 41 65 39
monaco@waldhof.fr
waldhof.fr



MonteCarlo-RealEstate.com

Seite
5/6

Hinweis : 82437645

This document does not form part of any offer or contract. All measurements, areas and distances are approximate. The information and plans contained herein are believed to be correct, however, their accuracy is not guaranteed. The photographs show only certain parts of the property at the time they were taken. This offer is subject to change of price or other conditions, without prior notice.



WALDHOF REAL ESTATE

Waldhof Real Estate

Tél : +33 6 21 41 65 39
monaco@waldhof.fr
waldhof.fr



MonteCarlo-RealEstate.com

Seite
6/6

Hinweis : 82437645

This document does not form part of any offer or contract. All measurements, areas and distances are approximate. The information and plans contained herein are believed to be correct, however, their accuracy is not guaranteed. The photographs show only certain parts of the property at the time they were taken. This offer is subject to change of price or other conditions, without prior notice.