



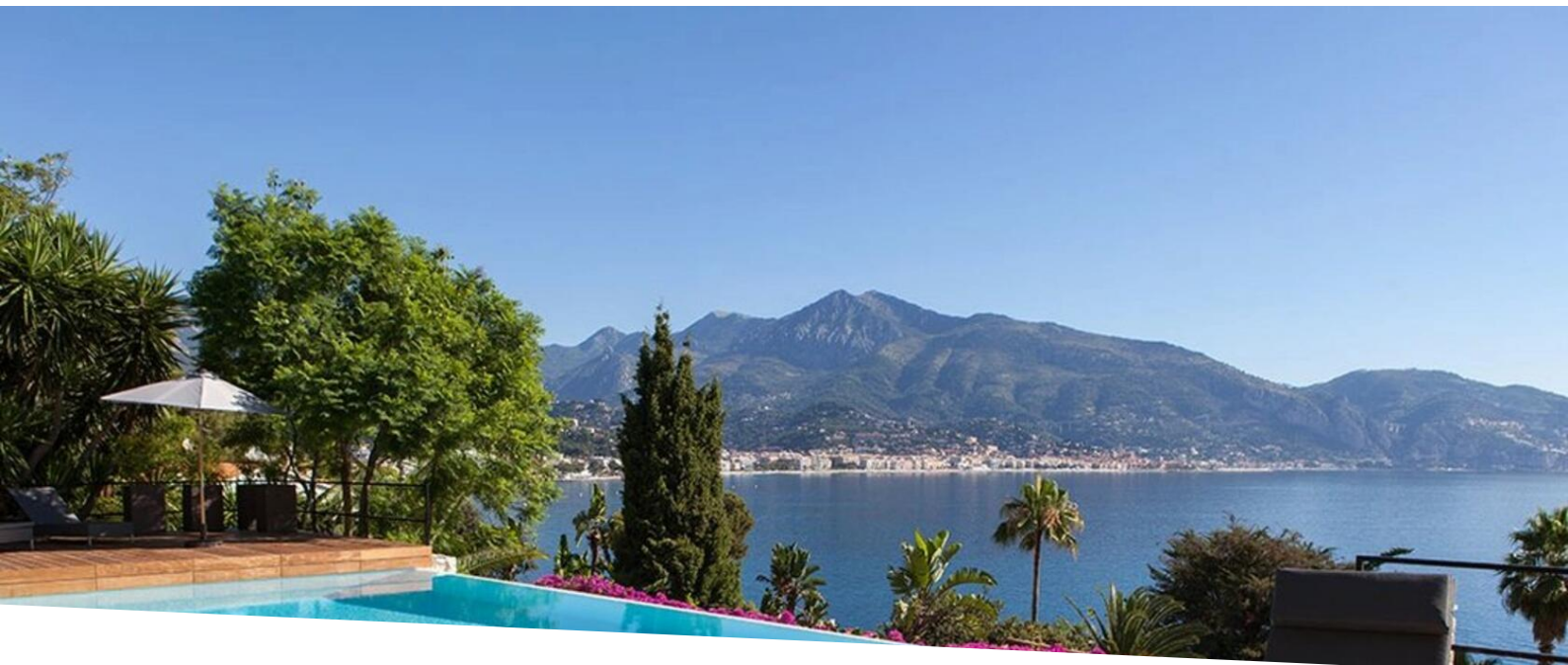
WALDHOF REAL ESTATE

Waldhof Real Estate

2, RUE DU GABIAN-C/° IBC  
3 ETG - BUREAU EXCLUSIF N° 707 98000 MONACO

98000 Monaco

Tél : +33 6 21 41 65 39  
monaco@waldhof.fr  
waldhof.fr



## Ferien Vermietung

## Miete auf Anfrage

Produkttyp  
**Haus**

Zimmer  
**+5 Zimmer**

Stadt  
**Roquebrune-Cap-  
Martin**  
Chambres  
**5**

Land  
**Frankreich**

Wohnfläche  
**375 m<sup>2</sup>**

Totale Fläche  
**2 670 m<sup>2</sup>**

Parkplatz  
**1**

Parkbox  
**1**

Hinweis  
**3171088**



MonteCarlo-RealEstate.com

Seite  
**1/6**

Hinweis : 3171088

This document does not form part of any offer or contract. All measurements, areas and distances are approximate. The information and plans contained herein are believed to be correct, however, their accuracy is not guaranteed. The photographs show only certain parts of the property at the time they were taken. This offer is subject to change of price or other conditions, without prior notice.

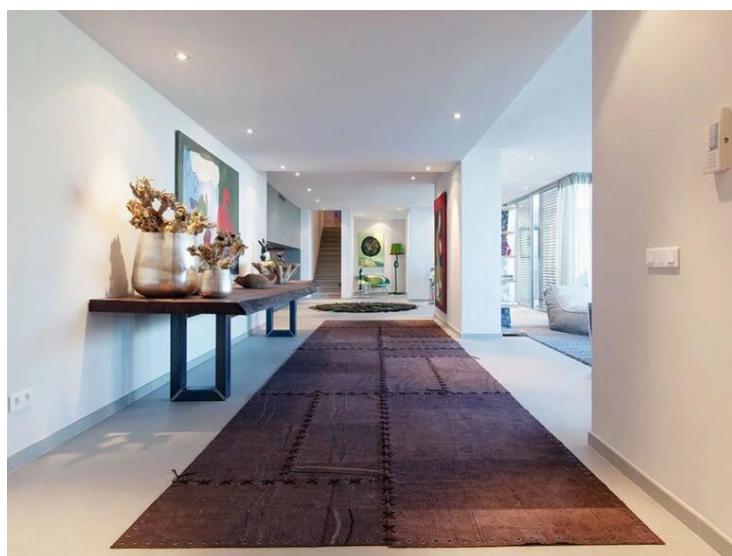




WALDHOF REAL ESTATE

Waldhof Real Estate

Tél : +33 6 21 41 65 39  
monaco@waldhof.fr  
waldhof.fr



MonteCarlo-RealEstate.com

Seite  
2/6

Hinweis : 3171088

This document does not form part of any offer or contract. All measurements, areas and distances are approximate. The information and plans contained herein are believed to be correct, however, their accuracy is not guaranteed. The photographs show only certain parts of the property at the time they were taken. This offer is subject to change of price or other conditions, without prior notice.

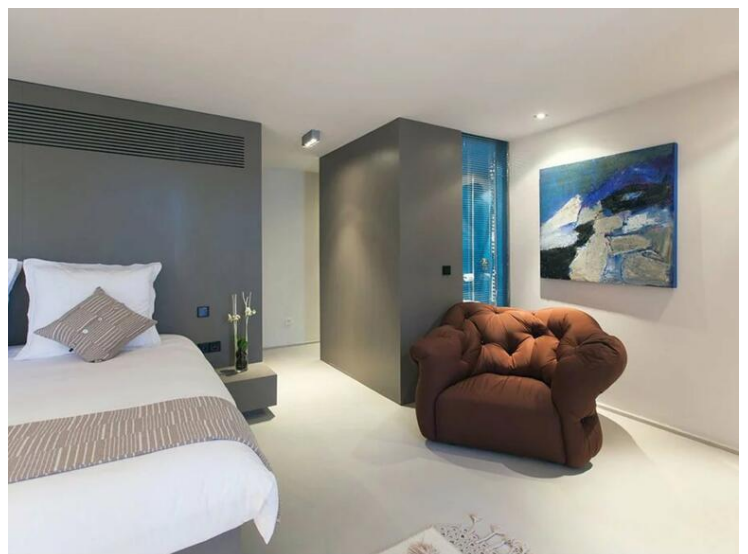
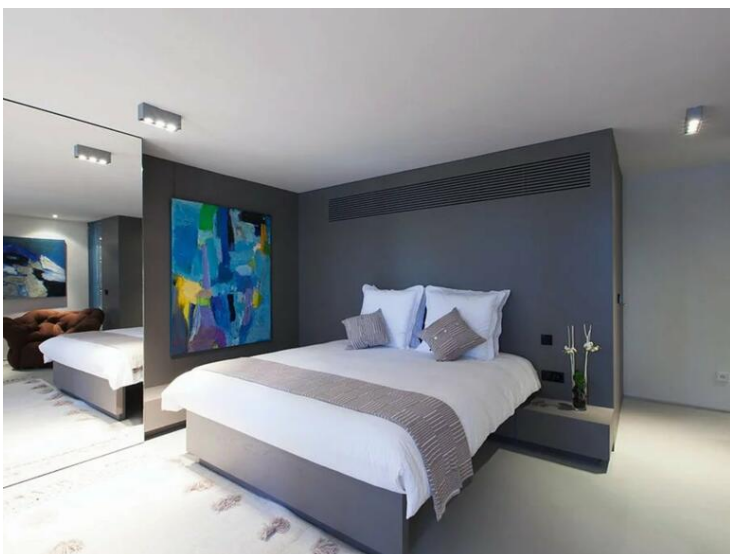
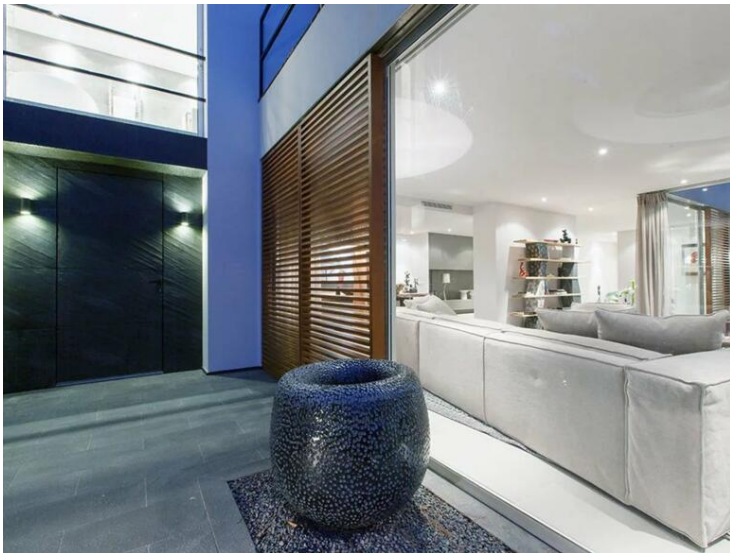




WALDHOF REAL ESTATE

Waldhof Real Estate

Tél : +33 6 21 41 65 39  
monaco@waldhof.fr  
waldhof.fr



MonteCarlo-RealEstate.com

Seite  
3/6

Hinweis : 3171088

This document does not form part of any offer or contract. All measurements, areas and distances are approximate. The information and plans contained herein are believed to be correct, however, their accuracy is not guaranteed. The photographs show only certain parts of the property at the time they were taken. This offer is subject to change of price or other conditions, without prior notice.

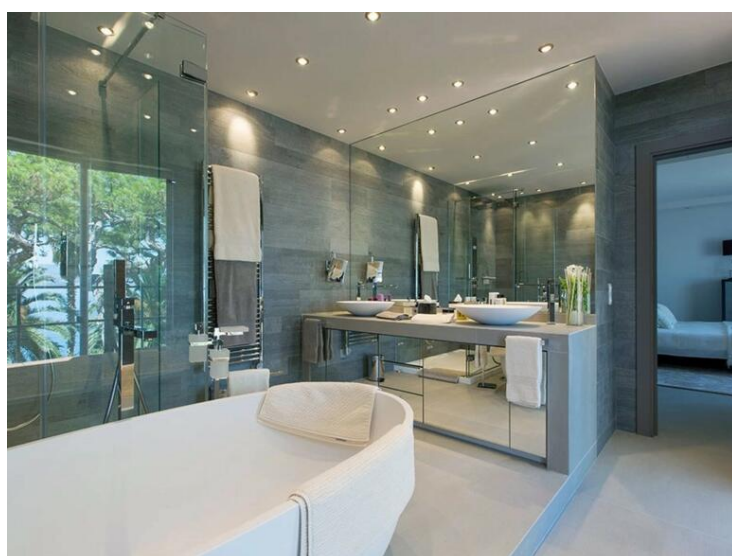
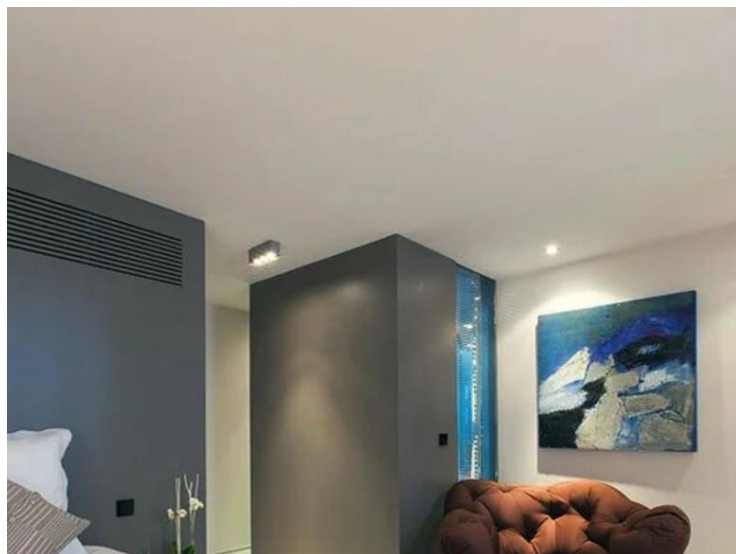




WALDHOF REAL ESTATE

Waldhof Real Estate

Tél : +33 6 21 41 65 39  
monaco@waldhof.fr  
waldhof.fr



MonteCarlo-RealEstate.com

Seite  
4/6

Hinweis : 3171088

This document does not form part of any offer or contract. All measurements, areas and distances are approximate. The information and plans contained herein are believed to be correct, however, their accuracy is not guaranteed. The photographs show only certain parts of the property at the time they were taken. This offer is subject to change of price or other conditions, without prior notice.

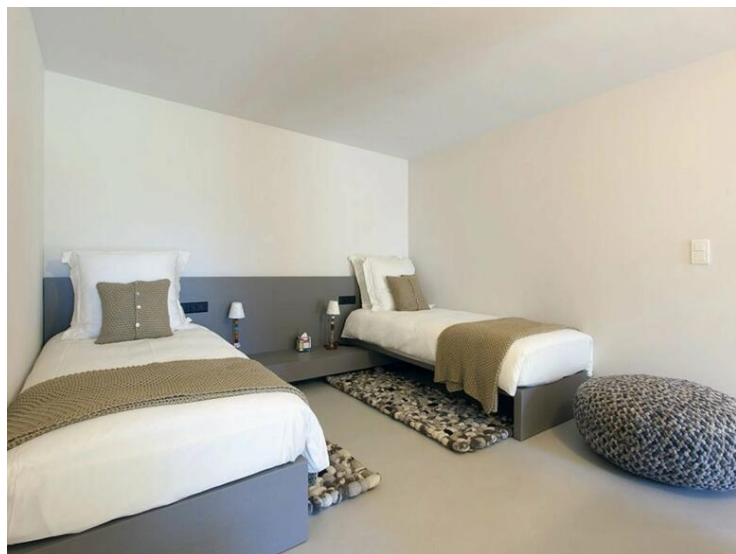




WALDHOF REAL ESTATE

Waldhof Real Estate

Tél : +33 6 21 41 65 39  
monaco@waldhof.fr  
waldhof.fr



MonteCarlo-RealEstate.com

Seite  
5/6

Hinweis : 3171088

This document does not form part of any offer or contract. All measurements, areas and distances are approximate. The information and plans contained herein are believed to be correct, however, their accuracy is not guaranteed. The photographs show only certain parts of the property at the time they were taken. This offer is subject to change of price or other conditions, without prior notice.

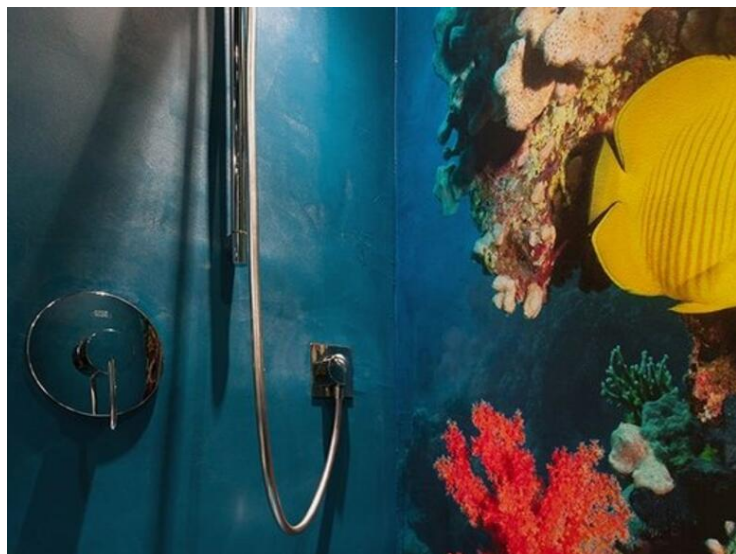




WALDHOF REAL ESTATE

Waldhof Real Estate

Tél : +33 6 21 41 65 39  
monaco@waldhof.fr  
waldhof.fr



MonteCarlo-RealEstate.com

Seite  
6/6

Hinweis : 3171088

This document does not form part of any offer or contract. All measurements, areas and distances are approximate. The information and plans contained herein are believed to be correct, however, their accuracy is not guaranteed. The photographs show only certain parts of the property at the time they were taken. This offer is subject to change of price or other conditions, without prior notice.